

Mobile Tracking System (MTS)

# MTS2-PLSB

PART NUMBERS:

MTS2-PLSB (2.0)

MTS2R-PLSB (RADOME)

**MTS2-PLSB is a 4X4 panel antenna for MIMO/MANET radios that operate in the 1.3-1.4GHz and 2.2-2.5 GHz ranges.**

Four TNC female connectors support dual radio operation in L and S bands simultaneously.

## APPLICATIONS

- MIMO / MANET radio networks.
- Urban area mesh radio networks.
- Ground-to-air links passing video and other IP data using an MTS 2.0.
- UAV, Manned Aerial Vehicles, and maritime environments using an MTS 2.0.

MADE IN  
  
U. S. A.

Equipment described herein is subject to US export regulations and may require a license prior to export. Diversion contrary to US law is prohibited. Imagery for illustration purposes only. Specifications subject to change without notice.

Technology Service Corporation®. Approved for public release 06/2026.

All rights reserved. Mobile Tracking System (MTS)

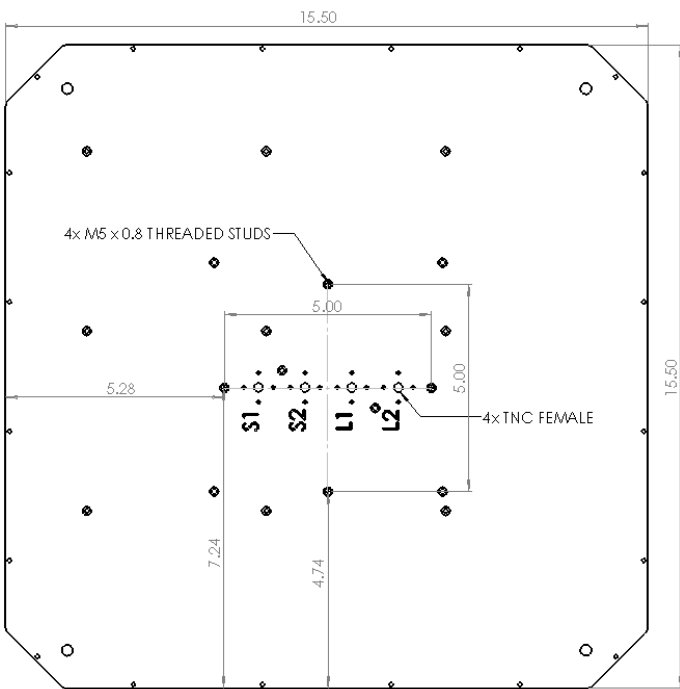
[tsc.com](https://www.tsc.com)



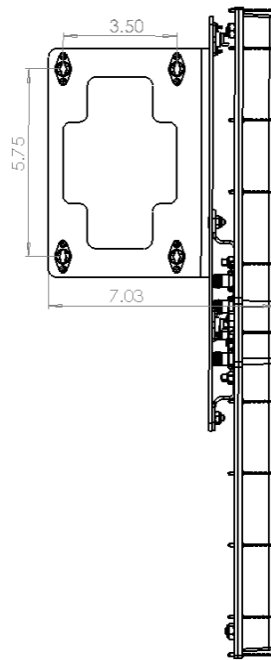
# FEATURES

- Four chain panel antenna for dual radio operation in L & S band simultaneously.
- Paired with a dual radio package (MPU5 & Silvus) ensures redundant datalinks
- Track the same target in either frequency band
- 1.3-1.4GHz and 2.2-2.5GHz frequency ranges.
- UV stable Kydex 100 black Radome.
- Direct mounting to an MTS 2.0 with the provided bracket or 4x M5 x 0.8 threaded studs for custom applications.
- 4x TNC female chains.
- 4 Inputs: 2x S-Band and 2x L-Band

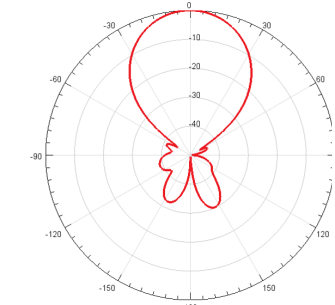
# ENGINEERING DRAWINGS AND RF PATTERNS



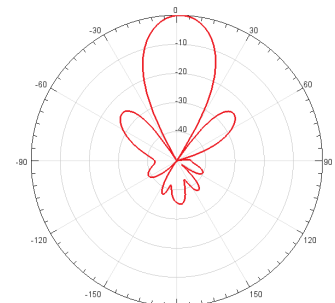
Threaded stud locations for custom solutions



Camloc mounting holes for MTS 2.0



L-Band



S-Band

# SPECIFICATIONS

Antenna Pattern	Directional Antenna	Azimuth Beamwidth (S-Band)	18°
Frequency Band	L & S	Elevation Beamwidth (S-Band)	18°
Impedance	50	Cross Polarization (L-Band)	30dB
Minimum Frequency (L-Band)	1.3GHz	Cross Polarization (S-Band)	18dB
Maximum Frequency (L-Band)	1.4GHz	Radome Material	UV Stable Kydex 100 Black
Minimum Frequency (S-Band)	2.2GHz	Ground Plane Required	No
Maximum Frequency (S-Band)	2.5GHz	Mounting Holes	4x Camloc Pattern or 4x M5 x 0.8 Studs
Maximum VSWR	1.5:1 Ratio	RF Connector Type	TNC Female x4
Maximum Gain (L/S)	14dBi / 18dBi	Product Length	16" / 407mm
Polarization	Slant Polarized	Product Width	16" / 407mm
Color	Black	Product Height (including bracket)	7" / 178mm
Maximum RF Input Power	20W	Product Height (antenna only)	1.5" / 40mm
Azimuth Beamwidth (L-Band)	33°	Product Weight	8lbs / 3.6kg
Elevation Beamwidth (L-Band)	33°		

Equipment described herein is subject to US export regulations and may require a license prior to export. Diversion contrary to US law is prohibited. Imagery for illustration purposes only. Specifications subject to change without notice.

Technology Service Corporation®. Approved for public release 02/2026.

All rights reserved. Mobile Tracking System (MTS)

tsc.com

